



# Muğla Sıtkı Koçman University Engineering Faculty

## Civil Engineering Department

July 2021

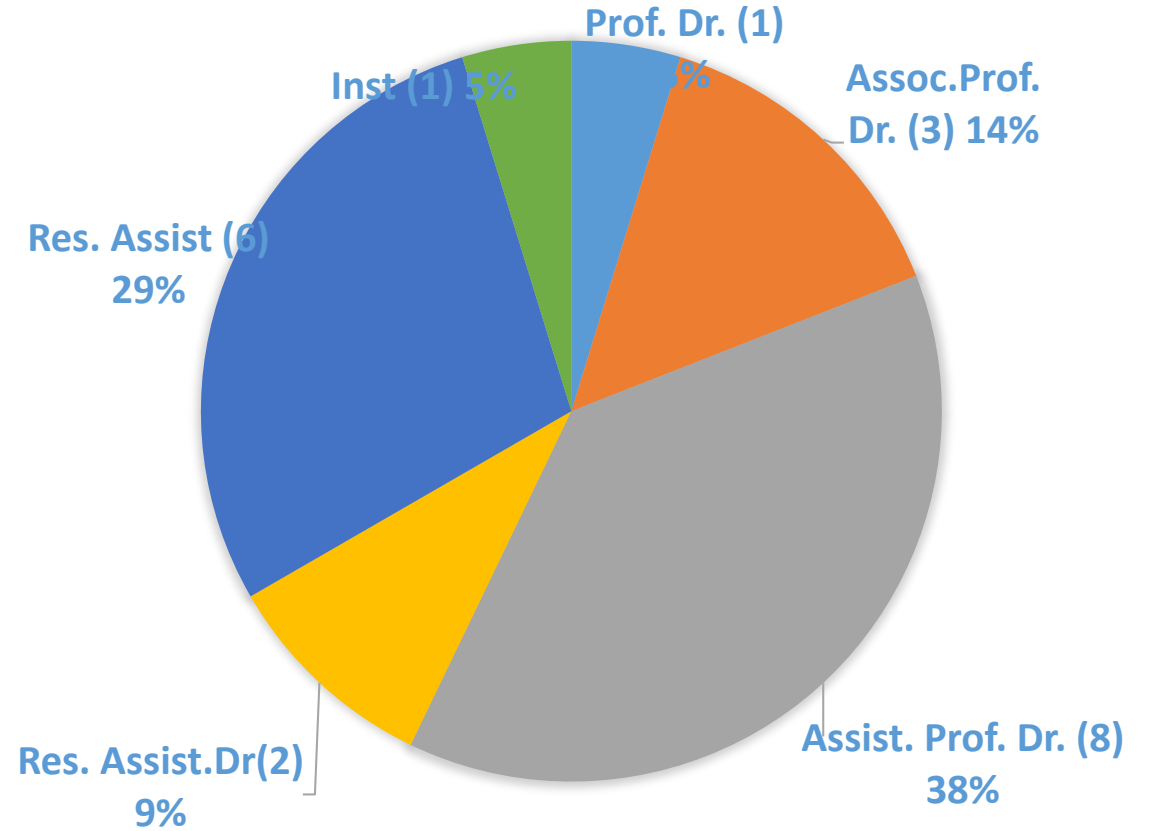
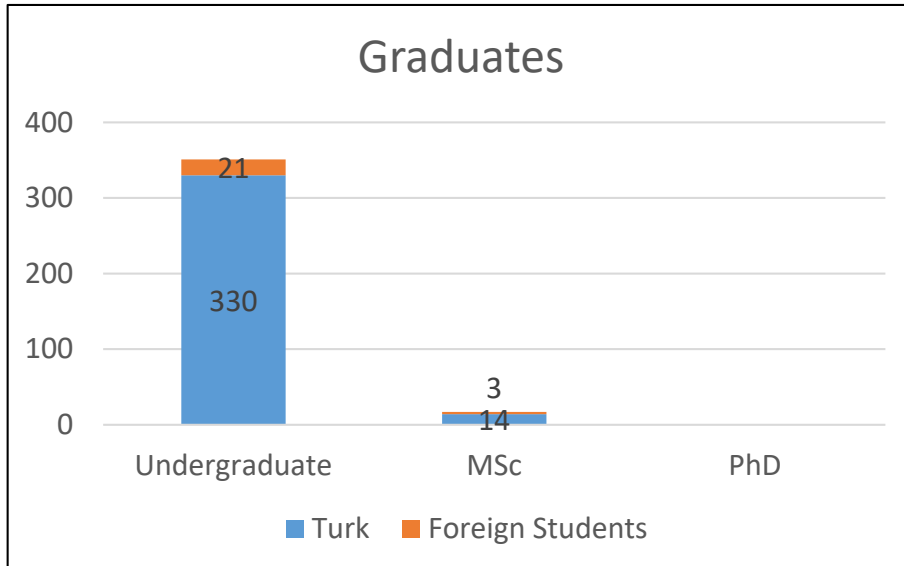
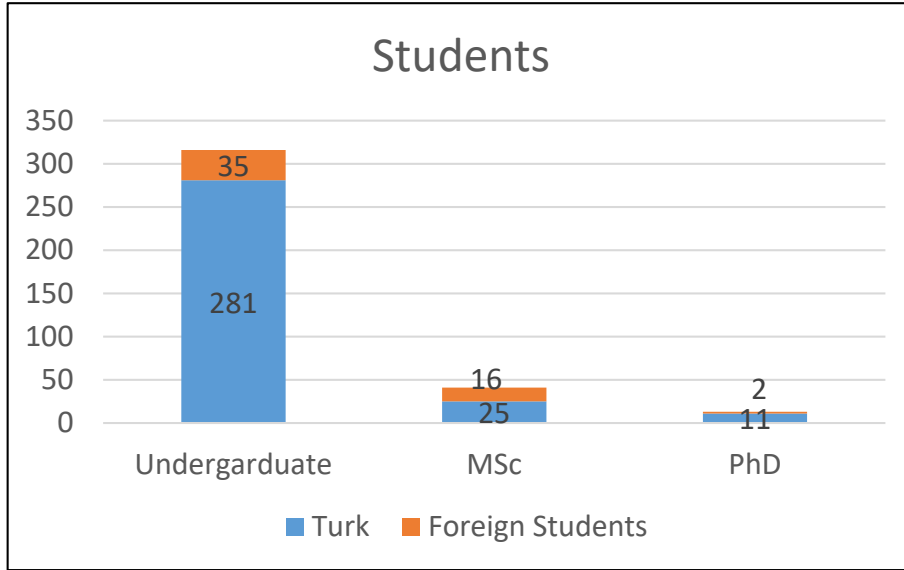
# Faculty/Department



- Muğla Sıtkı Koçman University (1992)
  - Engineering Faculty (2002)
    - Civil Engineering Department(2002)
- Undergraduate
  - Education: 2006
  - First Graduation: 2010
- Graduate (MSc)
  - Education : 2011
  - First Graduation : 2015
- Graduate (PhD)
  - Education : 2018
  - First Graduation : -



# Faculty and Students





# Department of Civil Engineering



# Program Outcomes



- Ability of applying mathematics, science and engineering knowledge in civil engineering area
- To gain ability of analysis, comment, evaluation and dealing with theoretical and experimental studies in field, office and laboratory
- To gain ability of designing and implementation of civil engineering systems and elements
- To obtain ability of working, execution and managing in interdisciplinary atmosphere with a team harmony

# Program Educational Objectives

- **EA1-** Our graduates work as design and site engineer in the national and international construction industry.
- EA2-** Our graduates operate in the construction industry by establishing their own engineering companies.
- EA3-** Our graduates continue their graduate education and/or develop their careers by working in university or research institutions.

# Civil Engineering Department



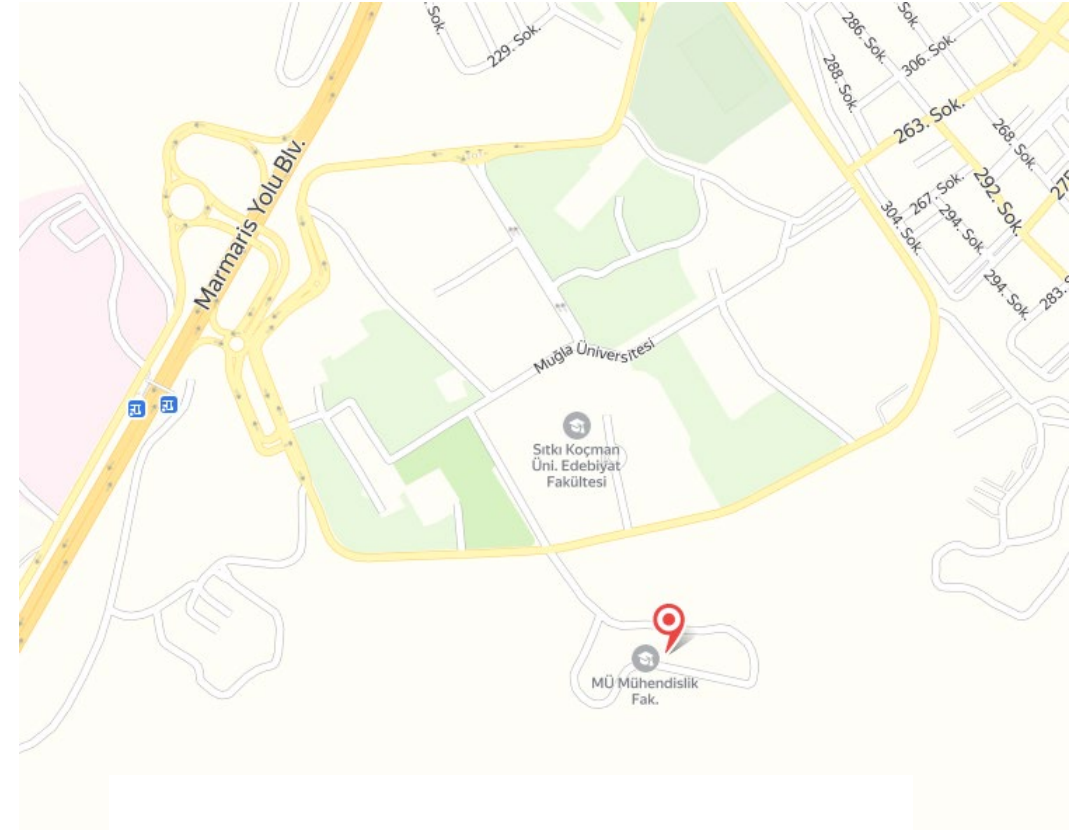
- English preparatory (1 year) + Undergraduate Education (4 year) → Civil Engineer
- Civil engineers work in coordination with the following professional groups..
  - Architect
  - Geological Engineer
  - Geophysical Engineer
  - Electrical Engineer
  - Mechanical Engineer





# Location of CE department

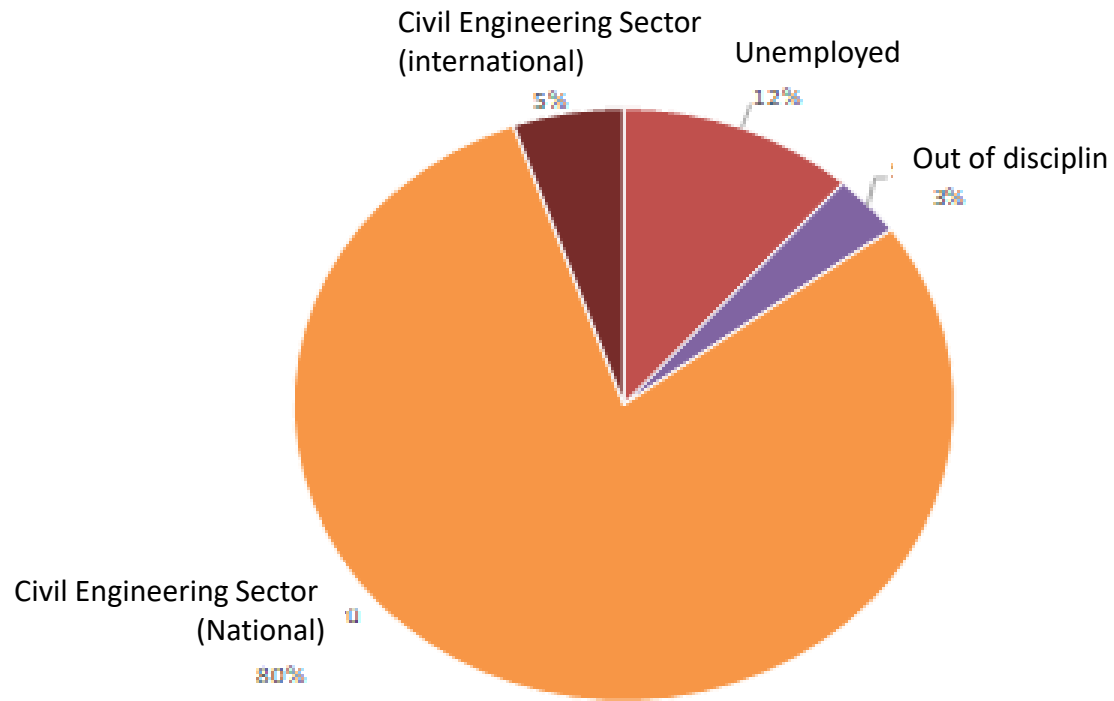
<https://harita.mu.edu.tr>



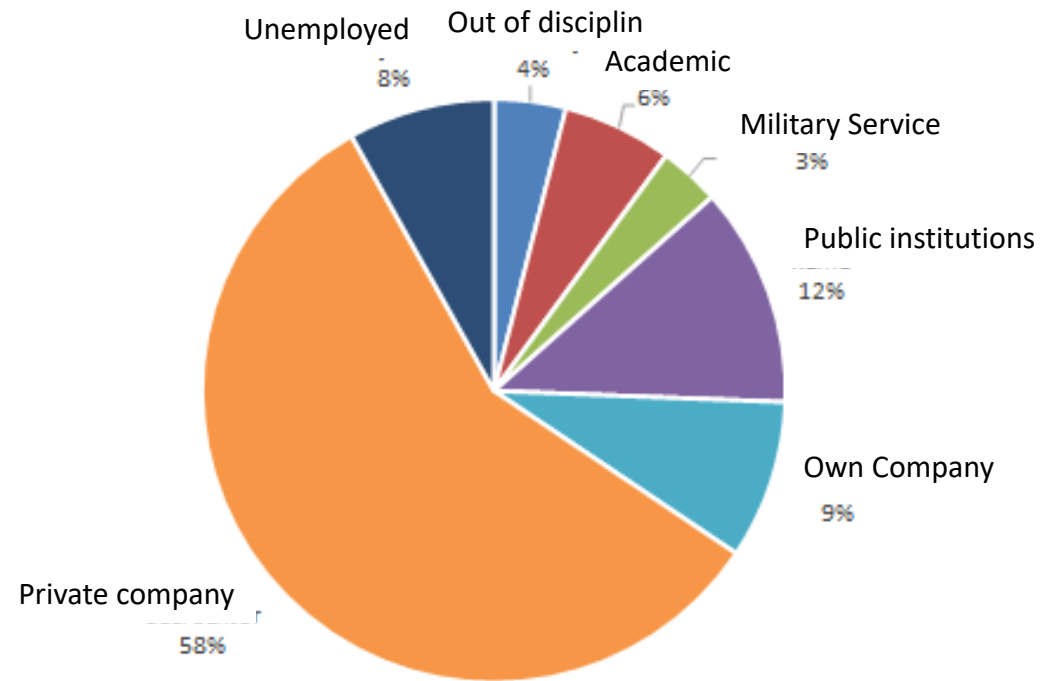


# Qualifications of Graduates (Undergraduate)

Employment status of graduates



Employment status of graduates (by sectors)



# Accreditation

Muğla Sıtkı Koçman University Civil Engineering Department Undergraduate Program has been accredited by **Association for Evaluation and Accreditation of Engineering Programs (MÜDEK)**. The accreditation, which started on May 1,2020, will end on September 30,2022.



## MÜDEK

Mühendislik Eğitim Programları Değerlendirme ve Akreditasyon Derneği

**Muğla Sıtkı Koçman Üniversitesi**  
**Mühendislik Fakültesi**

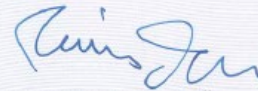
tarafından yürütülen

**İnşaat Mühendisliği (İngilizce)**  
**Lisans Programı**

**1 Mayıs 2020 – 30 Eylül 2022**

tarihleri arasında geçerli olmak üzere MÜDEK tarafından akredite edilmiştir.

  
Prof. Dr. Filiz B. Dilek  
MÜDEK MAK Başkanı  
27 Haziran 2020

  
Prof. Dr. Timur Doğu  
MÜDEK Yönetim Kurulu Başkanı  
27 Haziran 2020

# Reseraches and Projects



- Research Fields

## Hydraulics

Hydraulics, Hydrology, Water Resources, GIS, Remote Sensing, Computational Fluid, Dynamics (CFD), Dams, Flow-Bed-Structure Interaction, Fluid Mechanics, Hydrodynamics Hydroelectric Power Plants, Hydraulics and Hydromechanics, Mathematical Models Naval Structures, Optimisation Techniques (Genetic Algorithms, Based Optimization Algorithms), Planning and Management of Hydraulic Structures, Renewable Energy Resources, River Hydraulics, Sediment Transport in Open Channels, Slurry Transport in Pipes Spillways, Bottom Outlets and Energy Dissipation Structures (Planning, Modeling and Design), Scour and Erosion, Scour Around Bridge Footings, Surface Flow, Surface and Ground Water Flow, Storm Water Storage and Drainage Facilities, Statistical Analysis, Turbulent Flows, Water Resources

## Mechanics

Mechanical Modeling, Numerical Analysis, Analytical Analysis, Agitation Analysis, Principal Component Analysis, Free Surface Flows, Pseudo-Spectral Methods, Magnetohydrodynamic(Mhd) Flows, Meshless Methods, Sph Methods, Wood Materials Mechanics, Optimization Methods, Nonlinear Structural Analysis, Perturbation Analysis, Heat Conduction

## Transportation

Pavement Materials  
Highway Geometric Design Elements  
Pavement Design  
Warm Mix Asphalt  
Bituminous Materials

## Structures

Mechanics of Structures, Dynamics of Structures, Structure Analysis, Nondestructive Testing Methods, Reinforced Concrete, Structural Engineering, Earthquake Engineering, Experimental investigation of reinforced concrete elements, Performance Analysis of RC Structures and Their Behavior under Repeated Reversed Cyclic Loads, Nonlinear static and dynamic analysis of reinforced concrete structures, Concrete storage and silos Earthquake resistant Design, Reinforced concrete columns, Evaluation of earthquake performance of structures, Repairs and strengthening of Existing Structures, Performance-based design of constructions, Analysis of masonry and historical structures, Investigation of Nonlinear Behavior of Building Systems, Analysis and Design of Timber Materials, Timber Structures, Advanced Analysis and Design of Steel Materials, Steel, Engineering Seismology Seismic Hazard Assessment, Structural Health Monitoring

## Construction Materials

Deals with the chemical, physical and mechanical properties of construction materials, Tries to develop new materials fort he construction industry.  
Tries to develop new experimental set-ups and methods for testing construction materials.  
Tries the develop new technologies for application of construction materials.

## Geotechnical

remediation of contaminated soil , reuse of industrial by-products in geotechnical construction , strengthening soft clays , geosynthetics, laboratory testing techniques use of soil reinforcement in earth retention , subgrade improvement , environmental geotechnics



# Reseraches and Projects

## • Recent Projects

- Isolation of Environmental Ground Vibrations with Sheet Pile and Waste Rubber Chip Wave Barriers: Field Experiments and Numerical Modeling
- A case study to determine the soil improvement efficiency of jet-grout columns
- Effect of maturity of fiber-reinforced high performance cementitious composites on self-healing performance
- The Effect of Crystallized Additives on the Self-Healing Behavior of Engineered Cementitious Composites
- Determination of Earthquake Risk Assessment of Mugla Mentese District Emirbeyazıt District by Street Scanning Methods

## • Research Facilities (laboratories etc.)

- Structures Laboratory, Construction Materials Laboratory, Transportation Laboratory, Geotechnical Laboratory, Hydraulics Laboratory
- Our undergraduate, graduate and doctoral students have the opportunity to work in Tübitak and BAP projects.

# LABORATORIES

## Hydraulic Lab



## Structures lab



## Construction Materials lab



## Transportation lab



## Geotechnical lab

# Summer Prcatice

- Summer Practice
  - *At the end of the 4th and 6th semesters, students do a 30-day compulsory internship.*
- Internship places
  - Municipalities,
  - Private companies,
  - Public institutions



# Double Major / Minor

## Çift Ana Dal - Kabul Edilen Bölüm ve Kontenjan Bilgileri

**240 AKTS**

Kabul edilecek bölüm/program	Kabul Edileceği Dönem/Kontenjan	ŞARTLAR
Mühendislik Fakültesi Tüm Bölümleri	III. Yarıyıl- 2 öğrenci V. Yarıyıl- 2 öğrenci	Genel not ortalamasının en az 3.00 olması gerekmektedir.

## Yan Dal- Kabul Edilen Bölüm ve Kontenjan Bilgileri

**37 AKTS**

Kabul edilecek bölüm/program	Kabul Edileceği Dönem/Kontenjan	ŞARTLAR
Mühendislik Fakültesi Tüm Bölümleri	III. Yarıyıl- 2 öğrenci V. Yarıyıl- 2 öğrenci	Genel not ortalamasının en az 3.00 olması gerekmektedir.

# Student Exchange Opportunities

## ERASMUS Öğrenci Değişimi İkili Anlaşmalar

Bölüm	Üniversite	Ülke
İnşaat Mühendisliği Bölümü	VSB- Technical University of Ostrava	Çek Cumhuriyeti
	West Pomeranian University of Technology	Polonya
	HAMK University of Applied Sciences	Finlandiya
	Instituto Politecnico da Guarda	Portekiz
	Instituto Politecnico de Leiria	Portekiz

## Mevlana Öğrenci Değişimi İkili Anlaşmalar

Bölüm	Üniversite	Ülke
İnşaat Mühendisliği Bölümü	Kasetsart Üniversitesi	Tayland
	Tebriz Üniversitesi	İran
	New Mexico Institute of Mining and Technology	ABD

# Administration



Prof. Dr. Recep BİRGÜL – Chairman



Dr. Öğr. Üyesi Ebru HARMANDAR – Vice-Chair



Dr. Öğr. Üyesi Osman KAYA- Vice Chair



# Faculty



**Recep BİRGÜL**  
Prof.Dr.  
☎ 0(252) 211 1920  
🔗 Detay



**Altuğ SAYGILI**  
Doç.Dr.  
☎ 0(252) 211 1913- 1942  
🔗 Detay



**Osman KAYA**  
Doktor Öğretim Üyesi  
☎ 0(252) 211 5580  
🔗 Detay



**Özlem KASAP KESKİN**  
Doktor Öğretim Üyesi  
☎ 0(252) 211 5061  
🔗 Detay



**Ceyhun ÖZÇELİK**  
Doç.Dr.  
☎ 0(252) 211 1909- 5585  
🔗 Detay



**Çağdaş GÖNEN**  
Doç.Dr.  
☎ 0(252) 211 4914  
🔗 Detay



**Süleyman Bahadır KESKİN**  
Doktor Öğretim Üyesi  
☎ 0(252) 211 5469  
🔗 Detay



**Serap ALTIN KAYA**  
Öğr.Gör. (Uygulamalı Birim)  
🔗 Detay



**Deniz ÜLGEN**  
Doç.Dr.  
☎ 0(252) 211 5057  
🔗 Detay



**Burhan YILDIZ**  
Doktor Öğretim Üyesi  
☎ 0(252) 211 5768  
🔗 Detay



**Özer ZEYBEK**  
Araş.Gör.Dr.  
☎ 0(252) 211 2149  
🔗 Detay



**Vesile Hatun AKANSEL**  
Araş.Gör.Dr.  
☎ 0(252) 211 2061  
🔗 Detay



**Ebru HARMANDAR**  
Doktor Öğretim Üyesi  
☎ 0(252) 211 5712  
🔗 Detay



**Ersañ GÜRAY**  
Doktor Öğretim Üyesi  
☎ 0(252) 211 5059  
🔗 Detay



**Aysu GÖÇÜGENCİ**  
Araştırma Görevlisi  
☎ 0(252) 211 5051  
🔗 Detay



**Mervegül UYSAL**  
Araştırma Görevlisi  
☎ 0(252) 211 2065  
🔗 Detay



**İsmail Çağrı GÖRKEM**  
Doktor Öğretim Üyesi  
☎ 0(252) 211 5578  
🔗 Detay



**Mehmet Rifat KAHYAOĞLU**  
Doktor Öğretim Üyesi  
☎ 0(252) 211 1198- 1646  
🔗 Detay



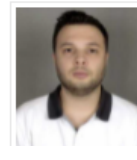
**Muhammet Ali ÖZEN**  
Araştırma Görevlisi  
🔗 Detay



**Onur TOYGAR**  
Araştırma Görevlisi  
☎ 0(252) 211 5467  
🔗 Detay



**Selda DURMAZ**  
Araştırma Görevlisi  
☎ 0(252) 211 5467  
🔗 Detay



**Yılmaz Öğünç TETİK**  
Araştırma Görevlisi  
☎ 0(252) 211 2065  
🔗 Detay

# CONTACT



<https://www.facebook.com/civilmugla/>  
[https://www.instagram.com/msku\\_civil/](https://www.instagram.com/msku_civil/)



[www.ce.mu.edu.tr](http://www.ce.mu.edu.tr)

*İletişim: Muğla Sıtkı Koçman Üniversitesi  
48000 Kötekli/Muğla | Tel: + 90 (252) 211-1931*

